



EUDR
compliant



TimberID™

Transform Timber Traceability Into Trust

How to deal with hidden risks in your timber or rubber supply chain?

- Complex supply chains
- Missing Documentation
- Looming Fines
- Disrupted supply chains

Many companies struggle to meet their EUDR obligations.

Without effective risk management, you risk costly supply chain disruptions or significant fines.

Timber ID empowers you to stay ahead of compliance requirements, safeguard your business, and ensure seamless, uninterrupted operations.



Navigating Opposites in Timber Compliance

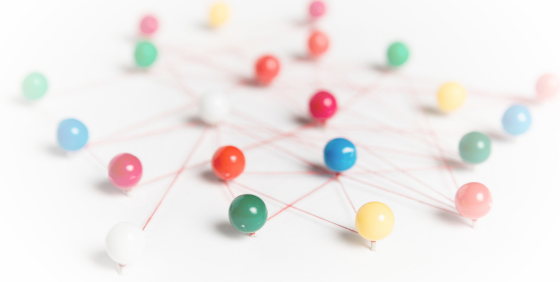


- Transparency vs. Business Secrets
- Complexity vs. Documentation Effort
- Bureaucracy vs. Efficiency
- Manual Work vs. Digitalization

Balancing these priorities can feel like a challenge - but you don't have to do it alone.

Timber ID offers a solution designed to help you manage these competing demands with ease.

Build trust with your customers while protecting your business interests, reducing paperwork, and streamlining every step of your supply chain compliance process.



- Manage your due diligence efforts in your private instance.
- Keep your business secrets and selectively share documentation with your customers on a need-to-know basis.
- Reduce complexity by implementing clear procedures.
- Collaborate on due diligence throughout your supply chain – upstream and downstream and thereby reduce your effort by 80%
- Perform audits almost fully automatically
- Maintain documentation to proof compliance.

With our decentralized approach, you stay in control - your data remains entirely yours.

All due diligence information, including authorizations, audit reports, and transaction data, is securely managed within your own dedicated environment. You decide what to share and when - providing only the specific data your customer requests, and only upon their request.

This ensures maximum privacy, data security, and full compliance with your company's policies .

Unlock Efficiency at Every Stage

First Level: Centralized Data Management

Gain complete visibility over your supply chain's due diligence information - wherever you operate. With all your compliance data organized and easily accessible, you can instantly answer customer inquiries and provide the required information automatically. Whether you're an importer, exporter, or operator, Timber ID enables you to check and issue due diligence statements with ease.

Second Level: Seamless ERP Integration

Take efficiency to the next level by integrating Timber ID directly with your ERP system. Automate the link between incoming and outgoing materials, eliminating manual matching. This allows you to focus on strengthening the integrity of your due diligence process instead of managing paperwork.

Third Level: Fully Automated Data Exchange

Maximize automation by connecting your suppliers and customers through Timber ID. Digital delivery notes ensure every transaction is seamlessly tracked and documented, while due diligence information is shared automatically, just on this very delivery. This reduces the time and effort for compliance by up to 80%. Enhance your digital workflow further by integrating advanced traceability features - like Timber ID Authentication, GPS, and photo documentation - on a risk-based basis, for complete confidence in every delivery.





The foundation for storing, managing, and securely sharing your due diligence information. Seamlessly integrates with your ERP system and upholds the highest data protection standards, ensuring your information remains safe and confidential. Issue automatically Due Diligence Statements in "Traces".

Digital Delivery Note

Track every transaction effortlessly. Our Digital Delivery Note can be paired with advanced physical traceability features - such as GPS, photos, timestamps, and of course the TimberID Authentication - to provide end-to-end traceability across your supply chain.



For high-risk environments, this powerful authentication tool offers the highest level of traceability assurance available, giving you confidence in every step of the chain.

Audit Feature

Easily verify compliance throughout upstream supply chains and help you ascertain your EU supplier did perform his due diligence obligations. Open targeted audit trails at any time and collect all relevant information down to the plot level - quickly and transparently.

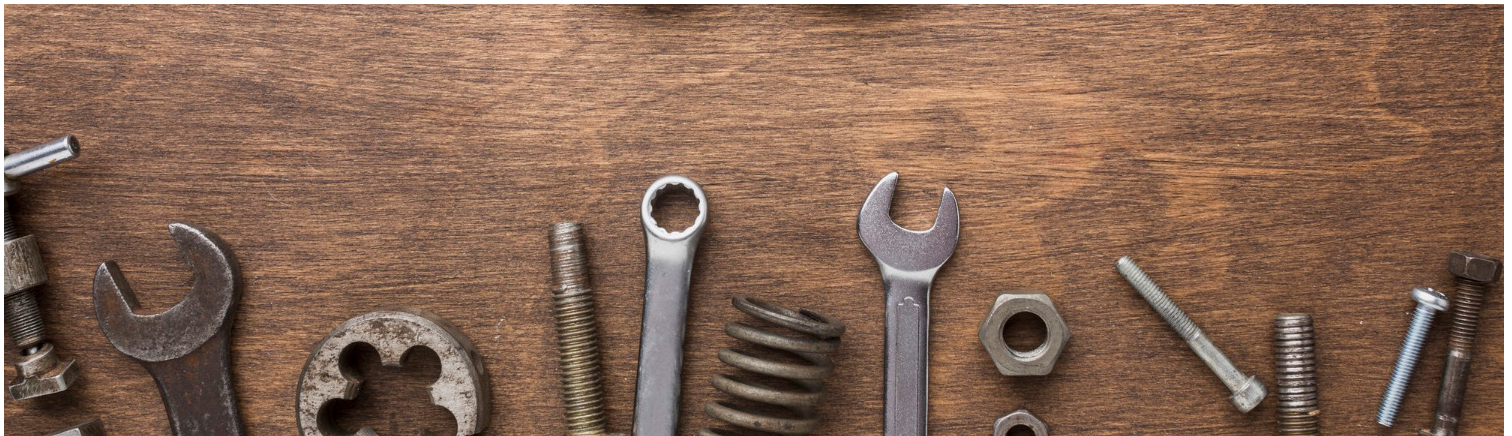
Deforestation Risk Map

In collaboration with leading data providers, we help you perform precise, location-specific checks tailored to your business.

Country-Specific Risk Templates

Benefit from up-to-date risk assessments tailored to each country in your supply chain. These adaptable templates streamline your risk mitigation program, making it easy to set clear expectations and automate compliance requests for your suppliers.

Choosing the right tools is key to keeping your supply chain seamless and resilient. Empower your suppliers to meet compliance requirements effortlessly, reducing friction and preventing costly disruptions. With robust solutions in place, you not only simplify operations - you also ensure your supply chain remains transparent, compliant, and future-proof.



From Red Flags to Green Lights



A powerful risk management template forms the cornerstone of your due diligence process. It clearly defines exactly which compliance measures your suppliers must meet, providing a transparent roadmap for risk mitigation. With just a few clicks, your suppliers receive clear, actionable requests - streamlining the documentation process and ensuring nothing is missed.

This verified, well-organized information empowers you to confidently approve materials and issue due diligence statements based on solid evidence - not on guesswork or patchy paperwork. Build trust throughout your supply chain with an approach that's proactive, transparent, and audit-ready from day one.

